



2 Riverlight Quay, London
SW11

GARTON JONES.COM



2 Riverlight Quay, London , SW11

GARTON JONES.COM

9 Albert
Embankment
London
SE1 7SP

Sales +44 (0) 20 7735 1888
nineelms@gartonjones.com
www.gartonjones.com

£525,000 Leasehold

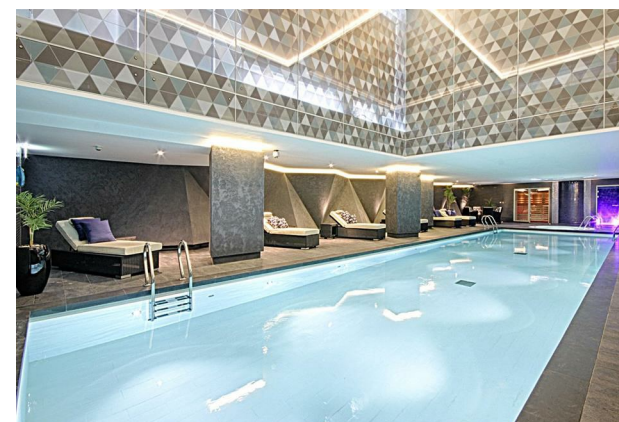
A Manhattan Suite apartment of approx. 439sq.ft (40.80sq.m.) available for sale in Riverlight Quay, a popular residential complex on the banks of the River Thames. The property has a well-proportioned bedroom space with a sliding partition door leading on to an open plan reception room with a smart integrated kitchen, floor to ceiling windows, a luxury bathroom suite and full-width balcony.

Residents of Riverlight Quay benefit from exclusive facilities to include a fantastic Heated Swimming Pool, Jacuzzi, Sauna and Steam Room as well as a well-equipped mezzanine "river view" Gymnasium. There is also a reception lounge and library, 24-hour concierge and a private cinema screening room and virtual golf room. The on-site amenities include the Black Cab Coffee Co, Nine Elms Tavern and Waitrose supermarket and there are plenty of nearby restaurants and bars adding to the increasing vibrancy of Nine Elms. Nine Elms Tube Station and Battersea Power Station Northern Line tube stops are both a short walk away from Riverlight Quay.

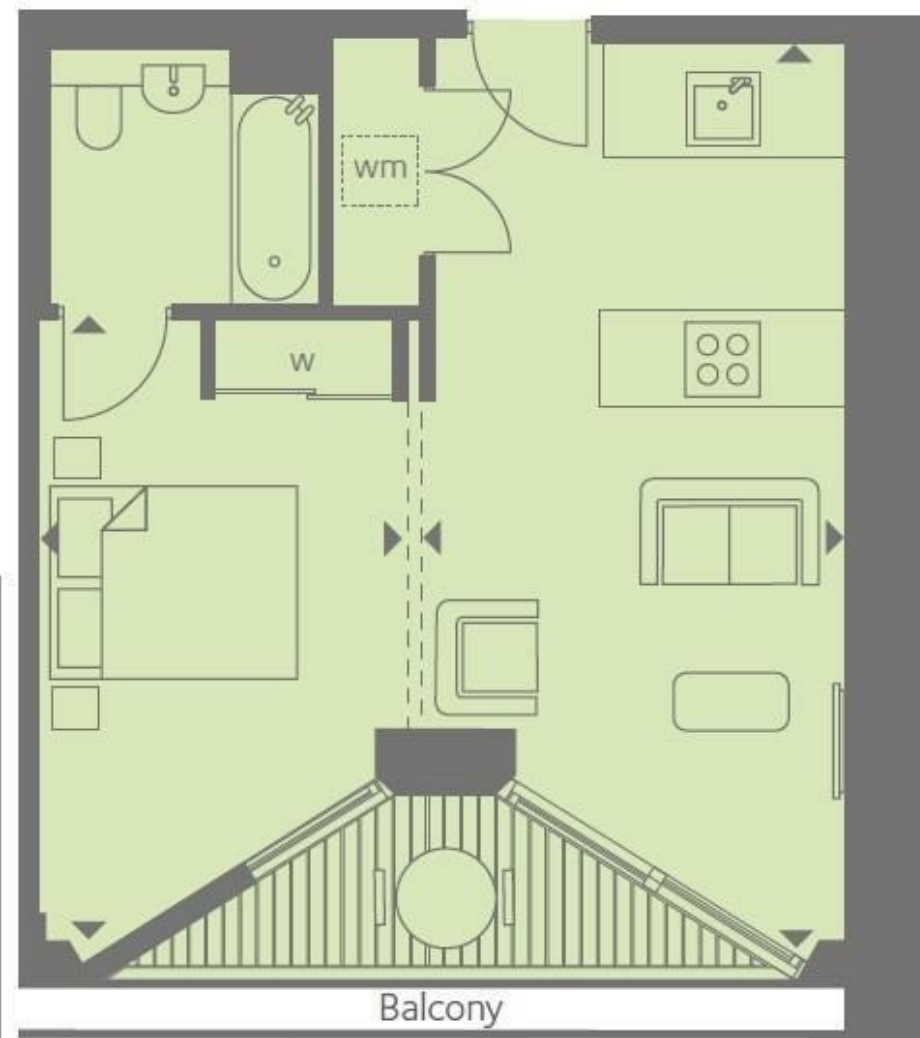
Please note furniture may differ to that shown in the current photos.

Council Tax Band D (London Borough of Wandsworth)
Leasehold: 986 Years Remaining (999 years from 1 January 2012)
Service Charges: £4,000 per annum (payable quarterly)

- Manhattan Suite Apartment
- 439sq.ft (40.8sq.m)
- Open Plan Reception
- Balcony
- Sliding Partition Doors
- 24 Hour Concierge
- Residents Gym
- Swimming Pool, Spa, Sauna & Steam Room
- Cinema Screening Room & Virtual Golf
- 0.3 Miles from Battersea Power Station Tube



EPC certificate available on request.



INTERNAL AREA M ² / SQ FT	40.80 / 439
--------------------------------------	-------------

